



#connectedlancer
2021 – 2022
Student Handbook
Lafayette High School



Dr. Tim Ricker
Superintendent



Dr. Karen Calcaterra
Principal



Dr. Michael Franklin
Associate Principal



Mr. Jonathan Sumner
Activities Director



Dr. Colleen Fields
Assistant Principal
Class of 2022



Dr. Timothy Jones
Assistant Principal
Class of 2023



Dr. Kirti Mehrotra
Assistant Principal
Class of 2024



Dr. Mandy Lewis
Assistant Principal
Class of 2025

Board of Education

Jaime Bayes, President
Lynne Midyett, Vice-Pres.

Directors:

Dr. Keith Kinder
Randy Miller
Loralee Mondl
Tamara Jo Rhomberg
Thomas Dunn

A Message from the Principal of Lafayette High School

Welcome to Lafayette High School, a place that offers you challenging opportunities and endless possibilities. Welcome to the new students who are joining us for the first time. We hope your adjustment period goes smoothly as you join an active and successful student body.

Lafayette is but a temporary stop in your journey in life, but a very important one. It will be the springboard for all that follows. Your academic, artistic, athletic and social growth during these four years can progress at a pace faster than anytime else in your life, and it will be supported in a culture of acceptance and excellence. Growth occurs when you make it happen. You must be involved. You must be an active participant. You must be positive and grab everything meaningful that is available to you. You have the opportunity to make your greatness greater. Once you take the first step, your journey begins.

This year, I challenge each one of you to develop your talents and skills in the many clubs, organizations, or athletic teams that await your participation at Lafayette. Share those talents and skills with others and become an active partner in shaping the outcomes of the ethic of excellence that lies ahead at Lafayette. Have a great school year!

Go Lancers!

Dr. Karen Calcaterra
Principal

This page has been intentionally left blank.

LHS Important Phone Numbers

	Main School Number	733-4100	
Principal	Room 217	Secretary	733-4113
Associate Principal	Room 217	Secretary	733-4114
Class of 2024 Principal	Room 261	Secretary	733-4111
Class of 2025 Principal	Room161	Secretary	733-4110
Class of 2022 Principal	Room 117	Secretary	733-4109
Class of 2023 Principal	Room 215	Secretary	733-4112
Activities Director	Room 115	Secretary	733-4137
Guidance	Room 123	Secretary	733-4125
Registrar	Room 121		733-4135
Attendance Hotline	24 Hours		733-4115

A Brief History of Lafayette High School

Lafayette opened its doors on Sept. 7, 1960. The original school was located on Clayton Road in the facility now known as Crestview Middle School. At that time, open fields surrounded the one small building that comprised the Lafayette campus. The size of the building and its location dominated activities in those early years. Gym classes were held in the cafeteria. The first football games were played on the baseball field. Proms were scheduled in the gym. Eureka High School and Lafayette High School shared a common yearbook. Even the first Homecoming Parade consisted of only a few decorated cars. Principal Art Keller, one assistant principal, one guidance counselor and a teaching staff of 23 greeted the original 288 students that entered. Morgan Selvidge was Superintendent for the Rockwood District. Resources were limited, but the spirit, drive, and enthusiasm that have come to characterize the Lafayette Student Body were evident from the first day.

As the school population grew, so did the size of the campus. The Gym Building, the Library Building, the Fine Arts Building, the Science Building, the Industrial Arts Building and the Lancer Stadium were all added to the original campus. Athletic and activity programs also grew to meet the student needs.

The mascot made its appearance in 1965 and the Class of 1967 donated the Lancer seal.

Lafayette High School moved to a new location in 1989 to accommodate the huge student population growth. A new building located on a 53- acre site at the corner of Clayton Road and Highway 109 awaited the arrival of over 1,800 students. Student growth continued to rise rapidly, and eight portable classrooms were added during the 1992-1993 school year.

With the addition of two new high schools during the 1993-1994 school year, the student population at Lafayette decreased, but continued growth in the area has led to Lafayette's growing enrollment. Redistricting some neighborhoods to other high schools has helped to maintain the population to its target numbers.

Other additions to the building have debuted through the years.

- In 1998, a special terrazzo tile Lancer was embedded into the Commons floor.
- At the beginning of the 2000-2001 school year, a new Flex Center and Science Department extension were opened to accommodate the over 2,000 students now calling Lafayette home.
- For the 2003-2004 school year, a new gym floor was unveiled with the Lancer mascot proudly displayed in the middle
- The 2005-2006 school year featured added classroom and storage space as well as a new music facilities and a stage craft room in the Fine Arts Wing.
- In 2006-2007, a new Commons greeted students and a new Welcome Center, Activities Office and Nurse's Office opened during second semester.
- 2008 welcomed a new state-of-the-art theater facility.
- In 2009-2010, a new media center, additional classroom space and courtyard opened.
- The 2010-2011 year featured a new multi-purpose room along with new locker rooms.
- LHS began the 2017-2018 school year with 17 new Science, Technology, Engineering and Mathematics work stations, labs and classrooms.
- 2019 marked the 30th anniversary of Lafayette High School at its current Clayton Road location.

Lafayette has remained focused through the years on its goal of maintaining excellence in and out of the classroom and ensuring high levels of learning for all students.



LHS Master Bell Schedules for 2021-2022

A DAY SCHEDULE *with 4 lunch shifts	
Zero Hour	7:20-8:22
1st Hour	8:28-9:13
2nd Hour	9:18-10:03
3rd Hour	10:08-10:53
4th Hour + Lunch	10:58-12:47
1st Lunch	10:53-11:23
2nd Lunch	11:23-11:53
3rd Lunch	11:53-12:23
4th Lunch	12:23-12:53
5th Hour	12:53-1:38
6th Hour	1:43-2:27
7th Hour	2:32-3:17

B DAY SCHEDULE	
Zero Hour	7:20-8:22
2nd Hour	8:28-9:59
4th Hour + Lunch	10:04-12:05
1st Lunch	10:02-10:32
2nd Lunch	10:34-11:04
3rd Lunch	11:05-11:35
4th Lunch	11:37-12:10
HR/Ac Lab	12:10-1:41
Home Room	12:10-12:17
Passing	12:17-12:22
Mod 1	12:22-12:59
Passing	12:59-1:04
Mod 2	1:04-1:41
6th Hour	1:46-3:17

C DAY SCHEDULE	
Zero Hour	7:20-8:22
1st Hour	8:28-9:59
3rd Hour + Lunch	10:04-12:05
1st Lunch	10:02-10:32
2nd Lunch	10:34-11:04
3rd Lunch	11:05-11:35
4th Lunch	11:37-12:10
5th Hour	12:10-1:41
7th Hour	1:46-3:17

LATE START SCHEDULE (B Day without Ac. Lab)	
2nd Hour	9:58-11:31
4th Hour + Lunch	11:36-1:37
1st Lunch	11:31-12:04
2nd Lunch	12:06-12:36
3rd Lunch	12:37-1:07
4th Lunch	1:09-1:42
6th Hour	1:42-3:17 (95 min inc. staggered release)

EARLY RELEASE SCHEDULE (A Day with shortened classes) January 13 and June 2, 2022	
Zero Hour	7:20-8:22
1st Hour	8:28-8:56
2nd Hour	9:01-9:29
3rd Hour	9:34-10:02
4th Hour	10:07-10:35
5th Hour	10:40-11:08
6th Hour	11:13-11:41
7th Hour + Grab & Go Lunch	11:46-12:16

Renaissance Recognition Programs

Academic Excellence - Renaissance

Students are recognized and rewarded for academic achievement on the basis of grade point average. Recognition categories are as follows:

- Gold: Students achieve a 4.0 or higher grade point average.
- Silver: Students achieve a 3.5 – 3.99 grade point average.
- Bronze: Students achieve a 3.0 – 3.49 grade point average.

Students qualifying receive complimentary items, discounts, and coupons from local Renaissance sponsors and wear a gold, silver, or bronze honor cord to wear during the graduation ceremony.

Academic Recognition

Academic Recognition is held throughout the year to highlight the academic achievements of our students and staff members. Students who qualify for the Renaissance Academic Excellence Program and who acquire other academic achievements are recognized. Lafayette's Teacher of the Year is honored along with the year's Staff Persons of the Month.

Choice Awards

Each staff member may select one student per year who has demonstrated exemplary achievement or citizenship as defined by the nominating staff member. Recipients receive a bronze medallion and are honored at a special ceremony.

Departmental Honors

Students who meet established criteria for departmental honors are eligible to wear honor cords during the graduation ceremony. Please review the departmental criteria for each cord [here](#).

Lancer Award

The Lancer Award is presented to one senior student who best emulates the criteria of scholarship, leadership, citizenship, character and community service. Faculty members will present senior students to faculty members in nominating speeches. Following the speeches, the faculty members select by ballot the recipient.

Scholar Athlete/Artist

Athletes who are members of and receive a letter from any LHS team under the jurisdiction of the MSHSAA and who achieve a semester GPA of 3.0 or higher during the previous semester of their respective team's competition season are eligible for recognition.

Artists or performers who are members of and receive a certificate of recognition for any LHS performing arts organization under the jurisdiction of the MSHSAA and achieve a GPA of 3.0 or higher during the previous semester are eligible for recognition.

The Scholar Athlete and/or Scholar Artist t-shirts and award certificates are given to students in the following categories:

- Gold: Students achieve a 4.0 or higher grade point average.
- Silver: Students achieve a 3.5 – 3.99 grade point average.
- Bronze: Students achieve a 3.0 – 3.49 grade point average.

Student of the Month

One student per grade, per month will be selected as the Student of the Month by committee vote.

Staff Person of the Month

One student per grade, per month will be selected as the Student of the Month by committee vote.

Teacher of the Year

One faculty member is selected annually to represent LHS as its Teacher of the Year in District and State competition.

Student Parking for 2021-2022

Please review the following information and read all links related to parking information for the 2021-2022 school year.

- This link provides all the details for parking at LHS: [2021-2022 LHS Parking Information](#). Please be sure to open all links included in this document.
- Complete the online parking application for your parking pass only after you have your driver's license.
- Parent Pay Online is open to complete your student's [Parking Permit Application](#). With the online application, you are able to pay online or choose "zero pay" that allows you to pay with cash or check in person.
- Sales will continue throughout the new school year until the lot is full.

Things to remember when choosing a parking space:

- The online application must be completed prior to choosing your space.
- Please have your driver's license in hand for verification purposes.
- Payment must be made when choosing your space if you did not pay online.

Be sure to review the [2021-2022 LHS Parking Lot Guidelines](#). If you have any questions, please call 636-733-4111.

Lafayette Student Rules, Policies, and Procedures

Rockwood School District and Lafayette High School policies and procedures are highlighted in this Student Handbook. Additional policies and more information are available using this link: [2021-2022 Rockwood Policies, Procedures and Consequences Handbook](#).

Academic Dishonesty

The District recognizes that honesty in academic endeavors is essential and the basis for true success. The District, therefore, will not tolerate any form of academic dishonesty. Academic dishonesty includes, but is not limited to, bringing answers into a testing area, copying homework or assessments from another student, providing answers for another student, using unauthorized notes or technology, taking credit for work that one did not do by failing to acknowledge parent, friend, or tutor assistance. Removing graded or ungraded tests or quizzes

from the classroom or school building or using technology to take pictures of the same is considered academic dishonesty.

First Offense: No credit for the work and parent contact.

Second Offense: No credit for the work, parent contact, and up to 3 days of in-school suspension.

Subsequent Offenses: No credit for the work, parent conference, and up to 10 days of out-of-school suspension.

Plagiarism

- Level 1: Though most of the work is the student's, a few lines or phrases of text or a paragraph is used without proper attribution.

Consequences:

First Offense: Student/teacher conference with instruction in avoiding plagiarism, parent contact, and possible grade reduction.

Subsequent Offenses: Student and parent conference with office, up to three days of in-school suspension, and no credit for work.

- Level 2: A significant portion of the work is not the student's and is not cited. This would include use of multiple paragraphs of someone else's work, use of someone's ideas, and/or repeated paraphrasing of someone else's work without attribution.

Consequences:

First Offense: Parent contact, no credit.

Subsequent Offenses: Student and parent conference with office, no credit for work and up to 3 days in-school suspension.

- Level 3: Little, if any, of the work is the student's; most, if not all, of the work has been copied verbatim or copied and slightly altered.

Consequences:

First Offense: Student and parent conference with office, no credit for work, and up to 3 days of out-of-school suspension.

Subsequent Offenses: Student and parent conference with office, no credit for work, and a minimum of 3 and up to 10 days of out-of-school suspension.

Announcements

Lafayette uses the school website, televisions in the Commons and throughout the building, and posters displayed around school to communicate information about events and activities.

Students may also advertise special events using posters (limit of 10) approved by the Activities Director.

Anti-Harassment Statement, Policies, and Regulations

It is the policy of the District to maintain an environment that is free from harassment, including sexual harassment, because of an individual's race, color, religion, sex, national origin, ethnicity, disability, sexual orientation, perceived sexual orientation, or gender identity. The District prohibits any and all forms of unlawful harassment and discrimination because of race, color, religion, sex, national origin, ethnicity, disability, sexual orientation, perceived sexual orientation, or gender identity.

It shall be a violation of District policy for any student, teacher, administrator, or other school personnel of this District to harass or unlawfully discriminate against any other student, teacher, administrator or other school personnel through conduct of a sexual nature.

It shall be a violation of District policy for any teacher, administrator, or other school personnel of this District to tolerate harassment because of a student's race, color, religion, national origin, ethnicity, disability, sexual orientation, perceived sexual orientation, or gender identity, as defined by District policy, by a student, teacher, administrator, other school personnel, or by any third parties who are participating in, observing, or otherwise engaged in activities, including sporting events and other extracurricular activities, under the auspices of the District.

For more information, please review [Board Policy 2130 - Harassment](#), [Board Policy 4810 - Sexual Harassment](#), [Regulation 1310 - Civil Rights, Title IX, Section 504](#), [Regulation 1320 - Definitions and Grievance Procedures](#), [Regulation 2130 - Harassment](#), and [Regulation 4810 - Sexual Harassment](#).

Breakfast and Lunch

(For the 21-22 school year, students will be provided a free breakfast and lunch.)

- Breakfast will be available for students before school. Students will be able to purchase drinks and snack items during this time.
- Lunch will be available in the Commons, and students will eat lunch at assigned tables.
- Food will not be allowed in the classroom. Students can snack on small items as they travel during the passing period.
- Drinks will be allowed in the classroom. Students are encouraged to bring their own water bottles each day.

For the 2021-2022 school year, students will be required to select a numbered table in the Commons and will keep that seat until the end of first semester. Students are required to remain at school during their lunch period.

Bullying

Lafayette High School and the Rockwood School District are committed to a safe and civil educational environment, conducive to teaching and learning in an environment free from threat, harassment, and any type of bullying behavior. Bullying of students is prohibited on all school property, at any school function, and on a school bus. Students are encouraged to report behavior they consider to be bullying to any teacher, staff member, or principal. For more information, please review [Board Policy 2612 - Bullying](#).

Chromebooks

Students are expected to bring their Chromebooks to class every day, fully charged. If students have an issue with their Chromebooks they should do the following:

- Performance Issues - Fill out a Help Desk ticket online at www.rsdmo.incidentiq.com or call the Help Desk at 636-733-1111.
- Hardware Issues - Students can take their devices to the library to be dropped off and to fill out a Help Desk ticket. Loaner Chromebooks will be provided (per availability) to students whose devices cannot be immediately repaired.

Class Rings

Students may order class rings during their sophomore year. For more information, please access Josten's website at <https://www.jostens.com/>.

Classification of Students

A student's classification (freshman, sophomore, junior, or senior) will be determined by the number of credits he/she has completed and recorded at the beginning of the school year.

- A student must have been promoted from the middle school to be classified as a freshman.
- A student must have at least six (6) units of high school work completed to be classified as a sophomore.
- A student must have completed twelve (12) units of credit to be classified as a junior.
- A student must have completed seventeen (17) units of credit to be classified as a senior.

Closed Campus

Students must remain on the school campus for the entire school day. Students leaving for pre-approved appointments must sign out of the building in the Welcome Center before leaving campus.

Daily Schedule

Arrival Procedures

Unless a student is enrolled in a Zero Hour class he/she will not be able to have access to school until 7:45 a.m.

Passing Period

Students are expected to arrive at their classes on time. Students will have five minutes to pass between classes.

Dismissal Procedures

Students will be dismissed through a staggered dismissal schedule to prevent congestion at common exits in the building and on the parking lot. Students will be expected to remain seated in their classroom until the appropriate dismissal time. Students who are carpooling and are dismissed at separate times should make a plan to meet at the driver's car if necessary.

Dismissal Schedule

- Staggered Dismissal (may be subject to change)
 - 3:12 - Seniors
 - 3:17 - all remaining students dismissed
 - 3:25 - buses loaded and leave

Detention

Detentions will be held after school on Mondays and Wednesdays from 3:30-4:30 p.m. in room 137.

Disability Services Public Notice

The Rockwood School District is required to locate, evaluate, and identify children with disabilities who are under the jurisdiction of the agency, regardless of the severity of the disability. This includes children attending private schools, children who live outside the district but are attending a private school within the district, highly mobile children, such as migrant and homeless children, children who are wards of the state, and children who are suspected of having a disability and in need of special education even though they are advancing from grade to grade. Please use this [link](#) to access this notice and other helpful information.

Discrimination Policies

Rockwood's Board of Education and the staff of Lafayette High School believe in the right of every student to receive equal opportunities in all educational programs and activities conducted by the district and reaffirm their beliefs that every student regardless of race, creed, color, sex, cultural or socio-economic status, or disabling condition be given equal opportunity for educational development.

The Rockwood School Board and Lafayette High School recognize the importance of providing each student with a school environment conducive to intellectual, emotional, and social growth through participation in a full range of educational programs and activities. Board and staff commitment ensure equal educational opportunities in course offerings, guidance and counseling, test procedures, extra-curricular activities, discipline procedures and student support services.

For more information, please review [Board Policy 1305 - Nondiscrimination](#), [Board Policy 1310 - Civil Rights, Title IX, and Section 504](#), [Board Policy 1320 - Nondiscrimination on the Basis of Sex](#), and [Board Policy 2100 - Nondiscrimination and Student Rights](#).

Dress Code

At Lafayette High School, students and staff are encouraged to dress in a manner that supports a positive learning environment.



We believe in a culture of acceptance and safety. Therefore, clothing should be free of language and symbols pertaining to alcohol, drugs, hate speech, and profanity. To maintain personal safety, tops should have straps that can prevent the top from being pulled down.

To maintain focus in the learning environment, students and staff are asked to avoid wearing clothing that exposes parts of the main torso (i.e., chest, back, midriff, bottom).

Some learning environments and classrooms require additional restrictions regarding head coverings and attire. These specific requirements will be addressed by the teacher and guidelines will be provided to students and parents.

Students are encouraged to address any issues which impede on their educational environment or safety with a staff member.

Fines/Fees

Students who have outstanding fines or fees may not be allowed to purchase a parking pass or attend the Homecoming Dance, Winter Dance, Junior/Senior Prom, or Graduation Ceremony until fines and fees are paid. See the grade level principal for information, if needed. Fines and fees may not be paid by personal check after April 15. All fines and fees (except Cafeteria) can be found online on the Parent Payment Portal - <https://mo-rockwood.intouchreceipting.com/>

Immunizations

In accordance with Missouri law, school health records must reflect current immunization information or the student may be excluded from school attendance. Students entering any Rockwood school for the first time are required to complete a physical examination.

In addition, the state of Missouri and the Rockwood School District require all seniors in high school to have their second Meningitis A shot after they turn 16 and before they start their senior year of high school. For more detailed information, please review this [letter](#) from our school nurses.

Library Procedures

Utilizing the Library and the services availed is valued in our learning community. Students are encouraged to visit the library before and after school to check out or return a book, engage in research using library resources, and participate in activities sponsored by Lafayette librarians and staff.

Lost and Found

Any item which has been lost and returned can be claimed in the Welcome Center.

Lockers and Locks

For the 2021-2022 school year, lockers will be assigned. If a student needs to change the location of his/her locker due to an extenuating circumstance, please contact the grade-level administrator.

Military Recruiters

In accordance with the provisions of the amendment to the Elementary and Secondary Education Act, the Rockwood School District will provide names, addresses and telephone numbers to military recruiters upon request, unless the parents notify the school district in writing that such information may be disclosed only with prior written consent. The district is also required to permit military recruiters to have the same access to students as is provided to post-secondary institutions and prospective employees.

Nurse/RSD Medication Policy

A nurse is on duty each day. Students must obtain a pass signed by a teacher prior to reporting to the Nurse's Office unless an emergency exists. The nurse is not permitted to dispense any over-the-counter or prescription medication that the parent/guardian provides without written consent from the doctor and the parent/guardian. The nurses may, following a nursing assessment and as directed by the consulting physician for the district and with parental consent, administer certain over-the-counter medications that are provided by the district, during the school day and/or during field trips to provide comfort, first aid, and minor pain relief to manage health-related barriers to learning.

It shall be the policy of the Board of Education that the giving of medicine to students during school hours be discouraged and be restricted to medication that can't be given on an alternative schedule.

The Board of Education recognizes some students may require medication for chronic or short-term illness/injury or disabling conditions during the school day to enable them to remain in school and participate in their education. High School students are allowed to carry medication if the following criteria are met:

- The medication is not a controlled substance, i.e. any medication which is classified as a narcotic, tranquilizer, amphetamine, barbiturate, or medications containing pseudoephedrine. These medications must be kept in the Health Office in a locked medication cabinet and accounted for by the Health Office staff on a routine basis.
- The parents/guardians of the student and the student's physician have signed the Self-Administration waiver. This waiver must list specifically all medications which the student will be allowed to have in his/her possession. This pertains to both over-the-counter medications (such as acetaminophen, cough medication, etc.) and prescription medication (such as antibiotics, eye drops, etc.) As always, medications may be administered by the nurse, with a parent request and physician order on file.

The nurse will keep copies of the Self-Administration waivers in the Health Office and give the individual students a copy to carry as proof of permission. Questions may be directed to the school nurse.

Lafayette High School is an allergy-aware school.

Offices

The grade-level offices are open during school hours throughout the year. All matters pertaining to athletics and activities are handled in the activities office. All remaining matters should be referred to Room 217.

Lancers Landing

Lancers Landing is located outside the Commons next to the Theater and is operated by the Lancer Parent Organization. It offers snack and drink items, spirit wear and other school supplies and miscellaneous items. Hours of operation for both are posted at the beginning of the year.

School Dances & Activities

Dances are limited to students enrolled at LHS. Students may bring one guest provided the name of the guest is recorded when the ticket is purchased. LHS graduates in good standing are welcome.

Once a student leaves a dance, he/she may not return. No tickets will be sold at the door for school dances. All tickets must be purchased in advance by the date advertised. No tickets will be sold to students with outstanding fines or fees. If a student is under the influence of drugs or alcohol at a school dance, or any other school-sponsored event, his/her parents will be called. School policy relative to drug/alcohol abuse will be enforced. Students under suspension or who have been expelled from LHS are not permitted to attend class or other school-sponsored activities.

Staying After School

Activity transportation is limited to Mondays and Wednesdays for all students, with the exception of students participating in MSHSAA-sponsored activities.

If a student stays after school, the student must be supervised by a Lafayette staff member.

Technology

Lafayette High School aspires to integrate technology use as a tool for learning and innovation. Important universal expectations for technology use in our school begins with each classroom teacher establishing reasonable expectations for his or her classroom.

Unless otherwise specified, no technology (cell phones, smart watches, Chromebooks, etc.) should be accessed during assessment events so as to maintain the integrity of the testing environment.

During passing periods, lunch shifts, and before/after school, students may use their technology devices in accordance with policies as indicated by the Rockwood School District.

Responsible digital citizenship is an expectation at Lafayette High School. This includes the responsible and respectful use of social media during the school day and outside of school, as it may impact the learning environment.

As a staff, we agree to model appropriate use of technology and look for ways to incorporate technology in our classrooms when it enhances the curriculum.

Lafayette staff is not responsible for lost, stolen, or damaged technology devices.

Any misuse of district or personal technology may result in disciplinary action.

Valuables

Lafayette High School is not responsible for any valuables lost, stolen, or damaged.

Visitors

All visitors must register with the Welcome Center staff.

Rockwood Student Records Policy

Unless a noncustodial parent has been denied visitation rights under section 452.400, access to records and information pertaining to a minor child, including, but not limited to, medical, dental, and school records, shall not be denied to a parent because the parent is not the child's custodial parent.

Any parent or legal guardian will have the right to inspect and review all official records, files and dates directly related to his/her children intended for school use or to be available to parties outside the school or school system including, but not necessarily limited to, identifying data, academic work completed, level of achievement, attendance data, cognitive ability scores, aptitude and psychology tests, family background information, teacher or counselor ratings, and observations and verified reports of serious or recurrent behavior patterns.

Whenever a student has attained 18 years of age, or is attending an institution of post-secondary education, the permission or consent required of, and the rights accorded to, the parents of the student shall thereafter only be required of and accorded to the student.

By Federal Law, students' records shall not be available for indiscriminate public inspection. If you wish to receive a copy of the Privacy Act, please contact the Principal's Office, Room 217.

School Emergency Procedures

Students will participate in several annual drills for earthquake, fire, intruder, and tornado as required by the Rockwood School District and the State of Missouri.

Earthquake

If Indoors:

- Stay inside.
- Move away from windows, shelves, and heavy objects or furniture that may fall.
- Take cover next to a desk or solid object. Do not take cover under a desk as it may collapse.
- In hallways, stairways or other areas where no cover is available, move to an interior wall. Turn away from windows, kneel alongside the wall, bend head close to your knees, and cover sides of your head with your elbows and clasp hands firmly behind your neck.
- In the library, immediately move away from windows and bookshelves and take appropriate cover.
- In laboratories and kitchens, all burners should be extinguished (if possible) before taking cover. Stay clear of hazardous chemicals that may spill.
- Be silent. Listen for evacuation instructions.

If Outdoors:

- Move to an open space, away from buildings and overhead power lines. Lie down or crouch low to the ground. Keep alert to be aware of dangers that may demand movement.

On the School Bus or in a Car:

- Stop the bus/car away from power lines, bridges, overpasses, and buildings. Students should remain in their seats and hold on. In the event of an actual earthquake, building evacuation takes place after the ground stops shaking.

Emergency Evacuation

If the need to evacuate the building occurs during a passing period, report to the area of your previous class hour teacher. If the need to evacuate the building occurs during your lunch shift, report to your third or fourth hour teacher (based on the ABC schedule) at the designated area outside the building.

Fire

When the signal sounds, teachers will instruct students to leave per the assigned evacuation route and to remain calm. Leave quietly without pushing or crowding, and go far enough away from the building so those behind you will not be crowded. The administrators will notify students when it is safe to re-enter the building.

Intruder Alert

An announcement will be made over the P.A. system if an intruder is in the building. Any student not in a classroom should move quickly to the closest classroom. Classroom doors will be locked and blinds will be closed and windows covered. Students should follow all instructions given by school personnel or emergency responders during an active intruder alert.

Tornado

- Each teacher will go to the door.
- Students file quietly into the hall and line up along the walls just outside the room. An aisle should be left down the center of the hall.
- Students and teachers will face the wall and cover their faces, hands and arms to protect the eyes from flying debris. Hold this position until further instructed.
- Students are to remain absolutely quiet so further instructions can be heard.
- Avoid any position opposite a window because of the danger of broken glass.
- An announcement will be made at the end of the drill.

Absences & Tardies & Attendance

At Lafayette High School, we believe that an important part of a student's success is regular attendance and prompt arrival to classes. As a tenet of this belief, we uphold the following universal expectations:

Tardy

As building relationships are a fundamental practice at Lafayette High School, teachers will greet students as they enter the classroom and monitor the halls to dissuade student tardiness. Students are expected to be in the classroom when the bell rings. Tardies are cumulative. If a student is not in the classroom at the beginning of class, a teacher will mark the student tardy and inform the student of the tardy. Should tardies accumulate, a student can expect consequences.

- Tardy 4 Grade level offices communicate home via email or phone call
- Tardy 5 Grade level offices call student in and phone parents while student in office
- Tardy 6-11 Grade level offices assign a 1-hour detention for each tardy
- Tardy 12-16 Grade level offices assign 1 day of ISS for each tardy
 - Loss of parking privileges
- Tardy 17+ Meeting with Associate Principal, case-by-case decision for intervention

Regulation 2310 – Student Absences and Excuses

All Missouri children between the ages of seven (7) years and seventeen (17) years and who have not completed sixteen (16) credits toward high school graduation are required to be under school jurisdiction during the hours school is in session. In the case of students seventeen (17) or above, consideration will be given to their request to be excused part of the day provided they submit a written request from the parent/guardian. The extent of the student workload shall depend upon the outcome of counseling involving the student, the parent/guardian and the counselor.

Changes in the workload which involve a shifting of the student's class schedule will normally be made only at the beginning of a semester.

The school year is defined as the period of time from the opening of school in August to the close of the regular school term. Any units of credit earned during the summer, while counted toward meeting graduation requirements and standing in class, are not considered credit earned during a regular school term. Students who are absent due to illness may be required to submit a doctor's statement. Students are required by law to attend a school continuously until they have reached age seventeen (17) or sixteen (16) if they have successfully completed sixteen (16) credits towards high school graduation. Any correspondence courses must be approved by the administration prior to enrollment, if credit is to be granted.

Absences

The following absences will be excused:

1. Death in the student's immediate family.
2. Illness of the student.
3. Doctor and dental appointments.
4. Certain days for religious observances.
5. Court appearance.
6. When a family is leaving town and desires to take the student with them, he/she may be excused up to five (5) school days provided that:
 - a. The school is notified in advance of the absence;
 - b. The student procures assignments in advance of the absence;
 - c. All assigned work is turned in upon returning to school.
 - d. All tests, etc. are made up at the direction of the individual teacher.

Absences for all other reasons are inexcusable and shall be treated as truancy.

Suspensions imposed by the school administration shall not count as an excused or unexcused absence.

Make-up Work After Absences

It shall be the responsibility of the student, on his/her own initiative, to contact the teacher(s) involved to determine make-up assignments and establish mutually agreeable times for daily and test make-up. Students will be granted the amount of time they were absent in which to make up work. Students who have justifiable reasons for absence such as illness or accident and whose probable absence will extend beyond two (2) weeks shall be referred for homebound instruction.

The building administrator and staff have the authority to establish specific procedures for administering the Make-Up Policy. Specific procedures for attendance accounting will be determined by the building principal.

The Rockwood School District recognizes that the district is composed of students who come from many diverse backgrounds and cultures. The district will take this diversity into consideration when scheduling major activities such as standardized testing, graduations, etc.; in an attempt to avoid scheduling such activities on major religious holidays whose observance necessitates a student's absence from school.

Each individual school will also take major religious holidays into consideration when scheduling major events at the school level such as concerts; awards programs; testing; major tests, projects or presentations; etc, in an attempt to avoid such conflicts.

The district recognizes that despite these efforts, some conflicts with major religious holidays may be unavoidable. In the event that such a conflict does occur, the absence will be excused and the procedures for make-up work will be followed. If additional accommodations are needed to minimize the impact on the student, they will be made at the discretion of the building principal.

High School Attendance Procedures and Actions

Unexcused Absences

Unexcused absences shall be treated as truancy.

When parents/guardians request that students leave the campus during the school day, a note or phone call from home will be required, and a permit-to-leave must be secured in the office. During the school day, students must secure permission from the office before missing a class or leaving the campus. Failure to comply will result in disciplinary action. Parents/guardians will be notified and a parental conference will be required prior to the student's returning to school.

Students participating in school-sponsored activities are not considered absent.

Homebound Instruction

For students to be considered for homebound instruction, the student must have health concerns that would require a school absence of at least ten school days, or have a medical condition such that periodic lengthy absences are necessary due to treatment. To arrange homebound instruction, parents should:

- Contact the Coordinator of Special Education/504 and Homebound or the superintendent's designee for coordination of homebound instruction to arrange for a meeting regarding possible homebound instruction.
- Complete an application for homebound instruction that includes the doctor's diagnosis and duration of the homebound instruction. The district may also request a treatment plan for re-entry from the student's doctor.

The amount and type of instruction or supportive service provided through the homebound program shall be determined in relation to each child's educational needs, and his or her ability to receive such services. Homebound services are meant to be temporary and the student should return to school as soon as possible.

If services are provided for the student and those services are not utilized, the district may terminate those services. Homebound education services will not be arranged for times outside of the academic calendar school year (i.e. no summer school services will be provided).

All students receiving homebound instruction are subject to the state's compulsory attendance laws and all district policies and regulations during the duration of homebound instruction.

Parent/Guardian Responsibilities

Parents/Guardians have responsibility for requiring and promoting their child's regular school attendance, the first step in achieving academic success.

Missouri School Law under the Compulsory School Attendance subsection places the burden of responsibility for school attendance on the parent/guardian:

Every parent/guardian or other person in this state having charge, control or custody of a child between the ages of seven (7) and sixteen (16) years shall cause the child to attend regularly some public, private, parochial parish, or home school not less than the entire school term of the school which the child attends. (RSMo. 167.031)

Parents/guardians are responsible for notifying the school office of their child's absence. A phone call should be made to verify the absence on the day of the absence.

In the event of an attendance problem, parents/guardians and the school shall cooperatively work to resolve the situation.

Parents/guardians planning to take a student out of school are responsible for making advance arrangements with the school administration.

School Messenger Attendance Calling

Rockwood schools will use our School Messenger voice messaging system to alert parents/guardians of their child's unexcused absence.

Parents/Guardians, please be aware of the following:

- If a parent/guardian has NOT notified the school of their child's absences by noon, they will receive a School Messenger voice message from their school principal. Another call will be placed at the end of the school day.
- This message will be sent to the home phone and cell phones letting them know that their child is noted as having an unexcused absence for the school day
- In this message, principals will ask parents/guardians to call the school attendance secretary in order to clarify the reason for the child's absence.

School-Sponsored Absences

Students participating in school-sponsored events are considered excused. It is the responsibility of the student to secure permission from his or her teachers ahead of time to attend this event and to make arrangements prior to the absence to make up work.

Extended Absences

If a student will be absent for three (3) or more weeks due to a medical circumstance, parents/guardians must contact the student's counselor so a Homebound Teaching Application or other arrangements may be initiated.













Health and Safety - COVID-19

Masks are currently required in all Rockwood buildings, regardless of vaccination status.

- All students, visitors, and staff entering a Rockwood building or riding on Rockwood transportation must wear a mask.
- Students engaged in vigorous physical activity indoors (i.e. basketball, volleyball, wrestling) are not required to wear a mask. Once the physical activity is completed, ALL students must put a mask back on.
- All staff and coaches must wear a mask at all times while indoors (except while eating or drinking).
- Students participating in outdoor activities are not required to wear a mask.



Preventing Quarantines, Together Help Us Protect In-Person Learning for Students

These scenarios are for close contact with a COVID-19 positive individual who does not have respiratory symptoms at school, maintains 3 feet of distance, and:	IS properly wearing a face covering	IS NOT properly wearing a face covering
 <ul style="list-style-type: none"> ✓ Fully Vaccinated ✓ Properly wearing a Face Covering 	 No Quarantine	 No Quarantine
 <ul style="list-style-type: none"> ✓ Fully Vaccinated ✗ Not wearing a Face Covering* 	 No Quarantine	 No Quarantine
 <ul style="list-style-type: none"> ✗ Not Fully Vaccinated ✓ Properly wearing a Face Covering 	 No Quarantine	 Quarantine
 <ul style="list-style-type: none"> ✗ Not Fully Vaccinated ✗ Not wearing a Face Covering* 	 Quarantine	 Quarantine

Note: Quarantine will be required if transmission occurs

**Masks are currently required in all Rockwood buildings*

Injuries/Communicable Disease

Students who have been absent because of injuries or communicable diseases must see the nurse before returning to class.

Rockwood School Internet Usage Policy

A major goal of the Rockwood School District is to promote educational excellence by facilitating resource sharing, innovation, and communications by providing access to electronic-based information technology, including electronic mail (email) and Internet access to students, staff, teachers and administrators in the District.

Technology, used as an educational tool, can enhance student learning and expand the scope of instruction in many innovative ways. The Internet and email are to be used in a manner that is consistent with the District's standards of conduct and as part of the normal execution of the employee's or student's responsibilities. Use of these technology resources in a disruptive, inappropriate or illegal manner impairs the District's mission, wastes resources and will not be tolerated. The use of the District's technology and electronic resources is a privilege which may be revoked at any time. The following activities are among those not allowed on the District's network and constitute a violation of [District Policy 6321 - Internet Usage](#):

- Sharing confidential information about students or employees other than in the discharge of professional duties
- Accessing harmful, abusive, obscene, pornographic, descriptions of destructive devices, hateful, unlawful or otherwise objectionable material under current District policy or legal definitions
- Using obscene, vulgar, harassing or libelous language in electronic data files or e-mail
- Harassing, threatening, insulting or harming others in any way via email, electronic data or other network access
- Attempting to compromise security systems by any means or technology
- Using or capturing other users' passwords
- Sharing your password with other users
- Attempting to access without consent, destroy or damage the data files of others
- Running packet capture or network sniffer programs or systems without approval from the Technology Department
- Running network discovery or monitoring systems without approval from the Technology Department
- Intentionally distributing a computer virus, Trojan horse or any other type of malware program on District computers or network devices
- Downloading, filing, relaying or running any game or entertainment software or game server software, including games that run inside of web browsers except for specific instructional purposes
- Running programs designed to disrupt the network or create a denial of service of any District system or external system
- Running peer to peer file sharing systems without approval from the Technology Department
- Bypassing or defeating the web content filtering system without approval from the Technology Department
- Intentionally running programs that may "crash" or render the network and/or its components unreliable
- Utilizing or attempting to use any wireless personal computing device to connect to Rockwood School District's network without prior approval for purposes other than approved, including but not limited to downloading music, videos, or other data files
- Utilizing or attempting to use any wireless personal computing device to disrupt the Rockwood School District wireless network
- Utilizing the network including the e-mail system for soliciting, advertising, fundraising, commercial purposes or for financial gain, unless authorized by the District

- Utilizing the network for gambling or other illegal activities
- Claiming copyright privileges over files, data and/or materials developed in the scope of employment
- Violating any copyright laws
- Downloading, distributing or copying copyrighted software in violation of copyright laws
- Downloading, distributing or copying copyrighted music, videos, or any type of data in violation with copyright laws
- Downloading or installing any software package without the approval of the Technology Department
- Downloading onto District computers legally obtained music or video files that are not required for school assignments or instructional purposes
- Using streaming media players (audio or video) that are not required for school assignments or instructional purposes
- Sending anonymous email

*Students will receive a copy of the Internet Usage Policy at the start of school. Each will be required to read and sign off on the policy.

Student Academic Information

Abbreviations for Grading System

A = excellent	IC = incomplete
B = above average	EX = excused
C = average	AU = audit
D = below average	WP = withdraw passing
F = failing	WF = withdraw failing
	NG = no grade

Graduating Credits

Students must earn 24 credits required for graduation.

Cumulative GPA

Accumulated average of semester grades earned in grade 9 through the end of the last semester completed.

Semester Grade

High school semester grades are based on academic performance and mastery of curriculum objectives during the course of a semester.

Grade Point Average

Based on numerical values assigned per letter grade:

Non-Weighted Grading Scale = A-4; B-3; C-2; D-1; F-0

Weighted Grading Scale = A-5; B-4; C-3; D-1; F-0

Cadet Teaching

Students interested in pursuing a career in education may apply for a cadet teaching position. A student must have a cumulative GPA of 3.0 and have completed the course for which he/she will cadet to be eligible.

College Credit

Qualified students have the opportunity to earn college credit while in high school through the Advanced Placement (AP) program, the Advanced Credit program through the University of Missouri – St. Louis, dual enrollment or Tech Prep. Please refer to the Course Description Guide for eligible classes and qualifications. For additional information, see your school counselor or college and career counselor.

Grade Reports

Report cards are posted online at the end of each semester.

Graduation Requirements

Students will receive credit letters which explain their specific graduation requirements periodically during the year. Questions should be directed to the guidance counselor.

Incomplete Grades

A teacher may issue an Incomplete Grade (IC) at the end of grading periods, but at the end of the semester, a grade must be issued. Students must complete requirements in courses carrying an incomplete grade or a failing grade will be assigned.

Textbooks

- Textbooks, workbooks and all material issued for student use will be examined when turned in at completion of the unit/course. Students will be charged fees for loss/damage to material.
- Non-payment of fees will carry over into the following school year and will result in loss of privileges at school (i.e. dances, prom, graduation ceremony).

Withdrawing from Class

Students may withdraw from a class or switch classes within the first three school days of first semester with parent approval. Second semester changes must be completed prior to the beginning of the semester. During the first twenty days of a semester, a student may withdraw from a class with administrative approval if spaces exist in a study hall. From day 21 to 60 of a semester with administrative approval, a student will be assigned a Withdrawal Pass (WP) or Withdrawal Fail (WF) should he/she withdraw from a class. If a student is approved by an administrator to withdraw from a class after day 60, he/she will receive a failing grade. All

changes involving full-year courses must be approved by the student's grade level principal. Students should check with their counselors to determine exact dates for withdrawal.

Withdrawal Grades

The semester grade assigned when a student withdraws from class is determined as follows:

Week 1-4 No Grade First Semester: August 23 - September 17 Second Semester: January 18 - February 14	Week 5-12 WP or WF First Semester: September 20 - November 19 Second Semester: February 15 - April 22	Week 13-18 Failing Grade First Semester: November 22- January 13 Second Semester: April 25-June 2
---	--	--

School Counseling Department Information

School Counselors

Mr. Waeckerle	A - C
Ms. Tichacek	D - Hi
Mrs. Mullins	Hj - Mc
Mr. Small	Md - Sb
Ms. Moorman	Sc - Z
Mrs. Laudel	Social Worker
Ms. Wilder	Social Worker

College and Career Counselors

Mrs. Hicks	A – K
Mrs. Dusenberry	L – Z

Testing

Mrs. Brawner	A+/Testing Coordinator
Mrs. Hermach	PSAT/ACT Prep Coordinator

A+ Program

The A+ Schools program was established as part of the Missouri Outstanding School Act of 1993 in order to provide incentives for local high schools to raise academic expectations, reduce their dropout rate, establish relationships with the business community, and provide better career pathways to students. The goals of the A+ program are as follows:

- all students graduate from high school
- all students complete a challenging selection of high school studies
- all students proceed to college, postsecondary vocational/technical training, or a high wage job

Students who qualify could be eligible for two years of free tuition to any Missouri public community college, vocational school, or technical school. A+ scholarships may also be available to qualifying students at certain four-year institutions. Students may become eligible by meeting the following requirements:

- Have a signed A+ participant agreement on file in the A+ office.
- Attend an A+ designated high school for three consecutive years immediately prior to graduation.
- Graduate with an unweighted, unrounded GPA of 2.5 on a 4.0 scale.

- Maintain at least a 95% cumulative attendance record in grades 9 - 12.
- Achieve the math proficiency requirement with a score of advanced or proficient on the Algebra 1 End of Course Exam.
- Perform 50 hours of unpaid tutoring and/or mentoring with Rockwood students under Rockwood staff supervision.
- Maintain a record of good citizenship and avoid the use of alcohol and unlawful drugs
- Have five or less days of school suspension.
- Make a good faith effort to apply for non-payback financial aid by completing FAFSA (Free Application for Federal Student Aid).
- Register for Selective Service if applicable.

College and Career Counselors

The College and Career Counselors are available to assist all parents and students with the college selection process. It is especially important that seniors make an appointment with the College and Career Counselors as early as possible in the year.

School Counselor Appointments

Guidance services will continue to be available to students and families. Students will be encouraged to make an appointment with their counselor to provide the least disruption to their academics and classes. Students can make an appointment by emailing their counselor, by using this [link](#), or by scanning the QR code located outside the office and throughout the building and included in this document. For quick questions, students are encouraged to email their counselor directly. Drop-in services will still be available for any student needing immediate assistance.

School Counseling Services

The Guidance Department strives to enable students to reach their academic and human potential. To attain this goal, they offer the following services:

- academic, crisis, and individual counseling
- college and career information and planning
- parent conferences
- group counseling
- classroom presentations on guidance topics
- individual academic planning and advisement

Infinite Campus Parent Access

Lafayette teachers are using Infinite Campus, the district student information system, to calculate and post grades. Parents are invited to review student grades through the [Infinite Campus Parent Portal](#).

If a parent/guardian needs assistance setting up access to Infinite Campus, please access the [information page](#) on Rockwood School District's website, call the Help Desk at (636) 733-1111, or email Portal Assistance at portalhelp@rsdmo.org

Changing Schedules

The deadline for schedule changes is the third day of classes in each semester. Any changes in course selection after the first three days will not be permitted without administrative approval. The following criteria is used when examining requests for such change:

- when a scheduling mistake has been made (enrolled in an advanced course without the prerequisite)
- when there is a need to balance classes
- when classes must be cancelled due to insufficient enrollment
- where it is determined by school officials that a circumstance exists whereby the student has little chance to realize success. Students are encouraged to spend ample quality time studying the course descriptions before deciding upon course selections.

Testing Calendar

Date	Type of Test	Grade Level
October 5	Pre ACT	10
October 13	PSAT	10 (practice only) & 11 (students who are interested & register)
September-November	Practice ACT	11 (students who are interested and register)
December 15	ASVAB	10 - 12 (students who are interested and register)
January 4 - 13 April 19 - 28	EOC Assessments	9, 10, 11, 12 (Government, Econ, & missing EOCs) 9, 10, 11, 12 (Alg.1 & 2, Bio, Eng 2, Government, Econ)
January 4 - 13 April 19 - 28	MO Personal Finance Assessment	9, 10, 11, 12 (Per. Fin./Econ. Class)
April 5	ACT	11
May 2-13	AP	9, 10, 11, 12 (AP Class)

Academic Assistance Programs

Lafayette has many programs in place to assist those students who need some extra help in classes. Students and parents should talk with the grade-level principal and/or school counselor to get specific information.

Interventions for Improving Grades:

- Be in class on time and well-prepared each day. Participate with full attention in class activities.
- Keep an assignment planner to organize short-term/long-term projects. Break large projects into smaller chunks.
- Block off routine, quiet study time at home.
- Utilize Academic Lab time.
- Review notes periodically. Do not wait until the night before a test.
- Establish study groups with peers.
- Review sound test-taking techniques. Ask your teacher how to best study for his/her subject area.
- Check Infinite Campus regularly. Parents and students can access Infinite Campus using this [link](#).

- Reevaluate your priorities when activities or employment outside of school jeopardize your academic success.
- Use school resources available to you.

How to Get Help at School:

Teachers

- Work with a teacher during Academic Lab time.
- Talk to your teacher about specific suggestions for improvement.
- Ask your teacher about help sessions that he/she offers his/her students.

Peer Tutoring

- Mu Alpha Theta offers peer math tutoring in the after school.
- NHS and other student organizations offer peer tutoring.

School Counselors

- Sign up in the Counseling office for study skills sessions.
- Make an appointment with your school counselor for further recommendations.

Grade Level Principal

- Contact your grade level principal to be matched with a faculty mentor.
- Contact your grade level principal for further assistance.

Library

- The library houses an extensive collection of books, periodicals, ebooks, audiobooks and digital resources for student access.
- The library's hours are: Monday-Thursday, 7:50 a.m. to 4:10 p.m., and Friday, 7:50 a.m. to 3:30 p.m. (Times are subject to change.)

Athletics & Activities

Did you know: over 80 percent of the students at Lafayette participate in some type of school activity?

We believe that the opportunity for participation in a wide variety of student-selected activities is a vital part of the student's educational experience. Such participation is a privilege that carries with it responsibilities to the school, to the activity, to the student body, to the community, and to the student. These experiences contribute to the development of learning skills and emotional patterns that enable the student to make maximum use of his or her education.

Lafayette's student activities are considered an integral part of the school's program of education which provides experiences that will help to develop young men and young women physically, mentally, socially, and emotionally.

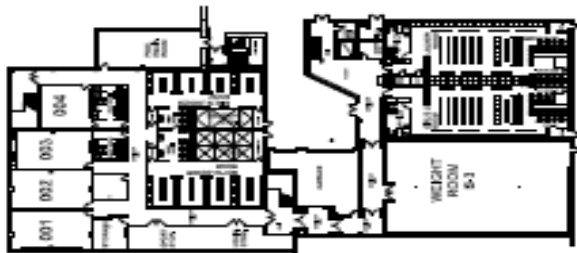
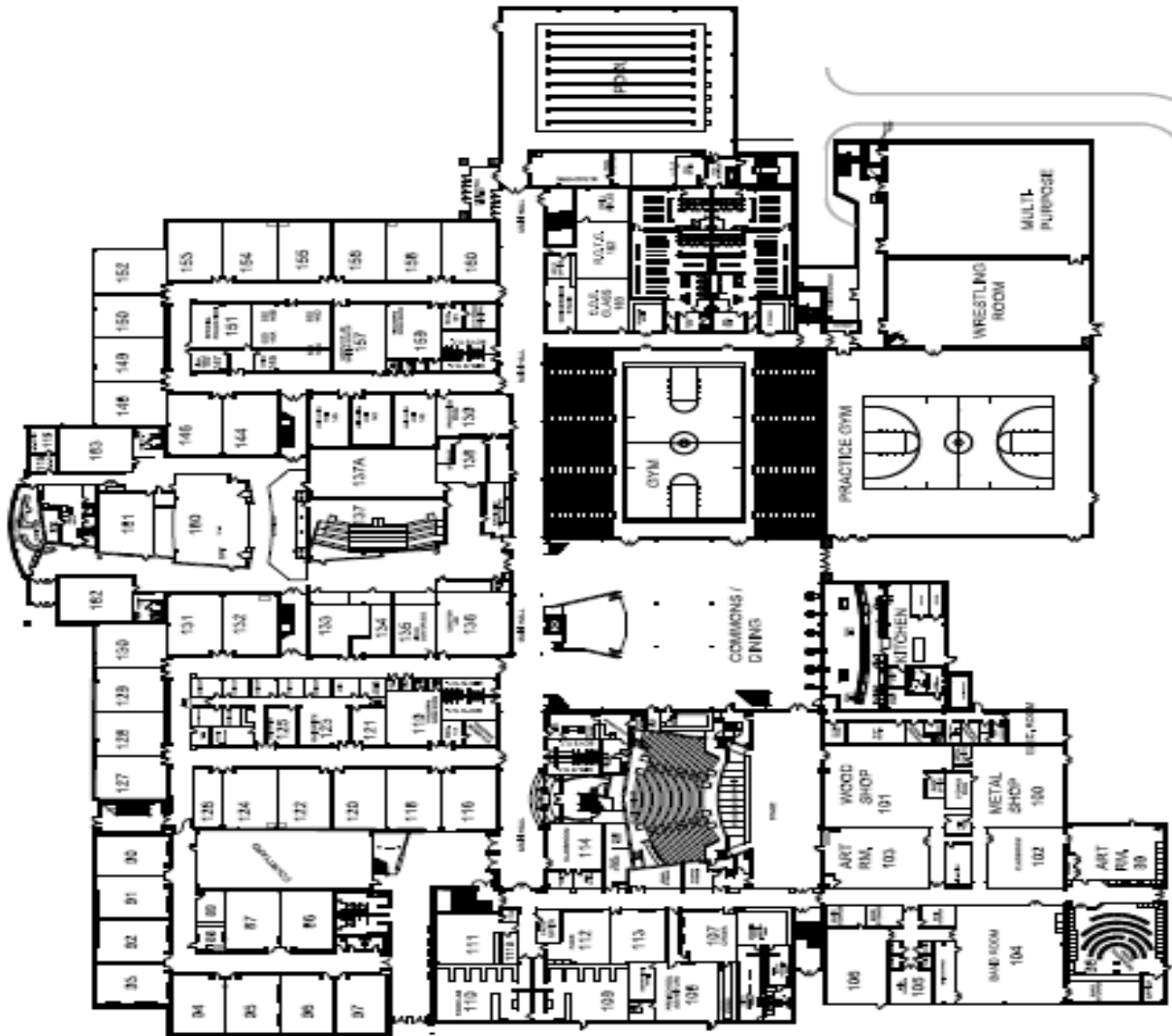
Lafayette offers a rich variety of extra-curricular clubs, academic teams, honorary groups, publications, performance groups and athletic teams to allow students to continue their educational growth process. Currently the activities program consists of over 100 different clubs, organizations, or teams which serve a diverse and wide range of student interests and talents. The LHS athletic program comprises more Missouri State High School Activities Association-sanctioned sports than any other Missouri High School. The Lancers have a proud tradition of athletic excellence including 42 State Championship teams. In addition, LHS is proud to have the highest number of student participants in its athletic programs and the highest average GPA for those athletes.

For the most up-to-date information involving Lafayette Activities, please visit our [school website](#). The [activities website](#) contains a complete schedule of school athletic competitions and activities.

For information regarding requirements and expectations for participating in activities at Lafayette High School, please review this link: [Lafayette Activities and Athletics Guidelines Handbook](#)

For a list of all sponsors and activities offered at Lafayette High School, please review this document: [List of Lafayette Athletics, Activities, & Clubs - Updated - 7/9/21](#)

LHS – Basement & First Floor

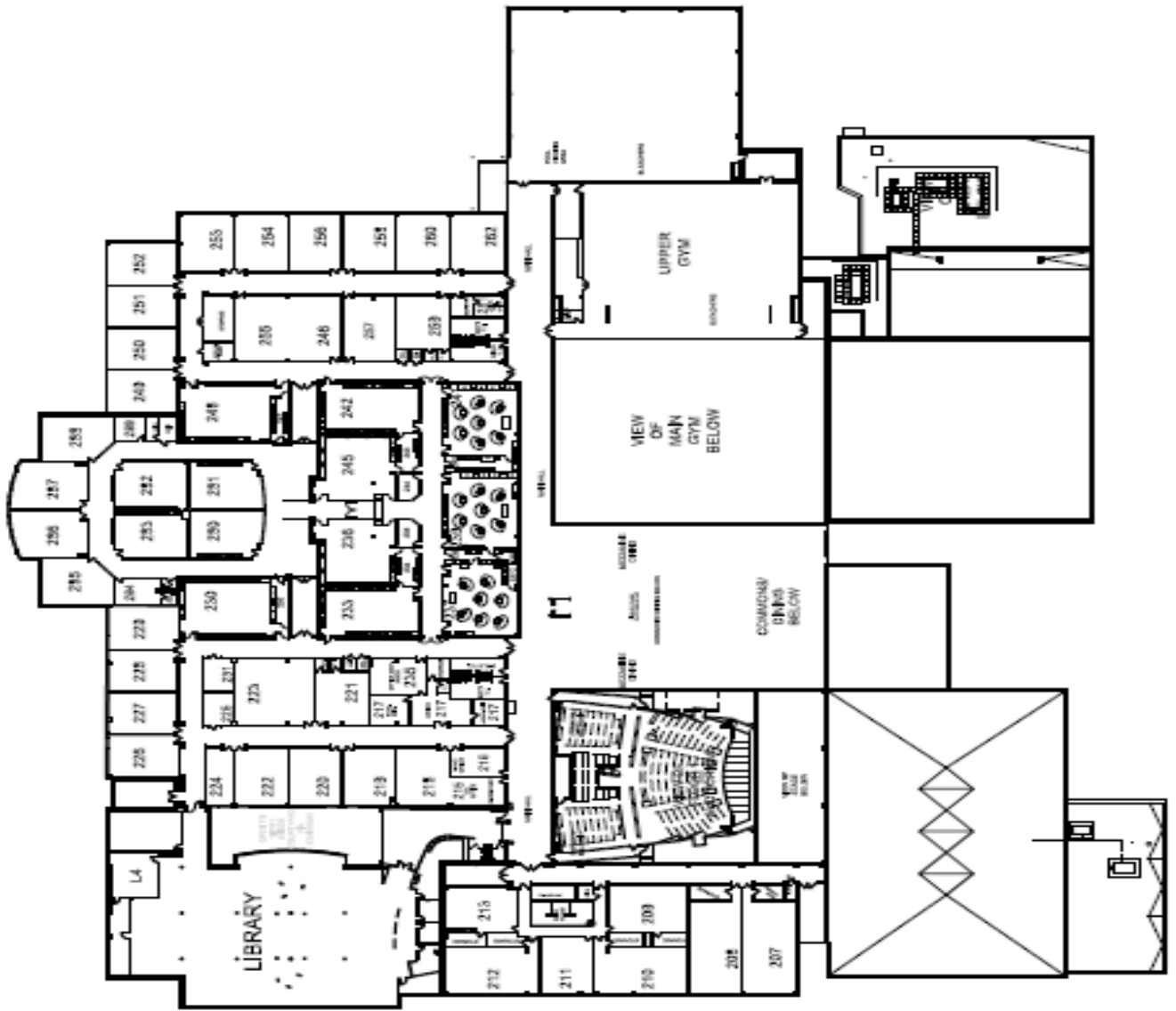


Basement Level
Floor Plan
Scale: 1" = 8'-0"

Lafayette High School
First Floor Plan
Scale: 1" = 32'-0"



LHS – Second Floor



Lafayette High School
Second Floor Plan
Scale: 1" = 32'-0"
North